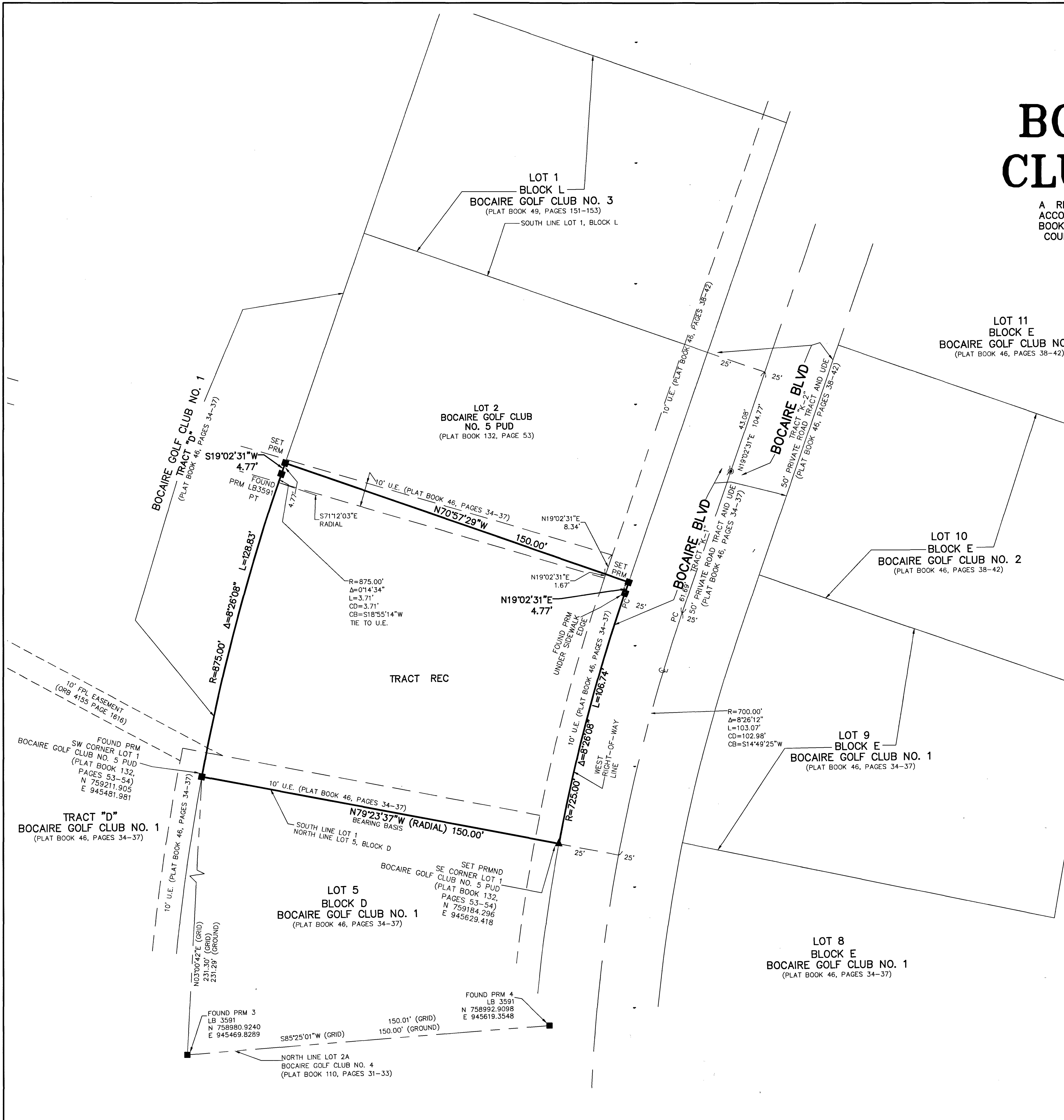


140

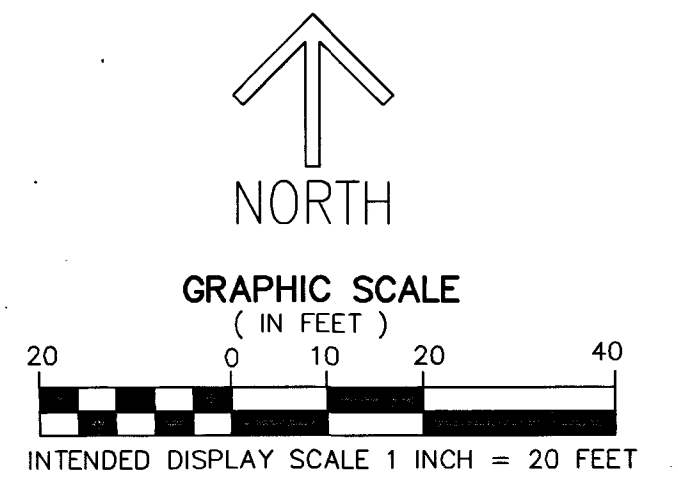
BOCAIRE GOLF CLUB NO. 6 PUD

A REPLAT OF LOT 1, BOCAIRE GOLF CLUB NO. 5 PUD, ACCORDING TO THE PLAT THEREOF, AS RECORDED IN PLAT BOOK 132, PAGE 53, OF THE PUBLIC RECORDS OF PALM BEACH COUNTY, FLORIDA, LYING IN SECTION 36, TOWNSHIP 46 SOUTH, RANGE 42 EAST, PALM BEACH COUNTY, FLORIDA,

SHEET 2 OF 2



THIS INSTRUMENT PREPARED BY
 DAVID P. LINDLEY
 OF
CAULFIELD and WHEELER, INC.
 SURVEYORS - ENGINEERS - PLANNERS
 7900 GLADES ROAD, SUITE 100
 BOCA RATON, FLORIDA 33434 - (561)392-1991
 CERTIFICATE OF AUTHORIZATION NO. LB3591



NOTES
COORDINATES, BEARINGS AND DISTANCES
 COORDINATES SHOWN ARE GRID
 DATUM = NAD 83 1990 ADJUSTMENT
 ZONE = FLORIDA EAST
 LINEAR UNIT = US SURVEY FEET
 COORDINATE SYSTEM 1983 STATE PLANE
 TRANSVERSE MERCATOR PROJECTION
 ALL DISTANCES ARE GROUND, UNLESS NOTED OTHERWISE
 SCALE FACTOR = 1.0000368
 GROUND DISTANCE X SCALE FACTOR = GRID DISTANCE
 BEARINGS AS SHOWN HEREON ARE GRID DATUM, NAD 83 1990
 ADJUSTMENT, FLORIDA EAST ZONE.
 COORDINATES SHOWN ON THE CONTROL P.R.M.S MEET OR

LEGEND/ABBREVIATIONS
 C - CENTERLINE
 BLVD - BOULEVARD
 CB - CHORD BEARING
 CD - CHORD DISTANCE
 E - EASTING (WHEN USED WITH COORDINATES)
 FPL - FLORIDA POWER AND LIGHT COMPANY
 LB - LICENSED BUSINESS
 N - NORTHING (WHEN USED WITH COORDINATES)
 NO - DENOTES NUMBER
 O.R.B. - OFFICIAL RECORD BOOK
 P.B. - PLAT BOOK
 P.B.C.R. - PALM BEACH COUNTY RECORDS
 PC - POINT OF CURVATURE
 PT - POINT OF TANGENCY
 PUD - PLANNED UNIT DEVELOPMENT
 R/W - RIGHT-OF-WAY
 UDE - UTILITY AND DRAINAGE EASEMENT
 U.E. - UTILITY EASEMENT
 ■ PRM - DENOTES SET PERMANENT REFERENCE MONUMENT
 4"x 4"x 24" CONCRETE MONUMENT WITH ALUMINUM DISK STAMPED "PRM LB 3591"
 ▲ PRMND - DENOTES PERMANENT REFERENCE MONUMENT SET NAIL AND DISK STAMPED "PRM LB 3591"
 ● - DENOTES SET PERMANENT CONTROL POINT
 PK NAIL/BRASS DISK STAMPED PCP LB3591 UNLESS OTHERWISE NOTED
 ● - DENOTES SET 5/8" IRON ROD WITH PLASTIC CAP ENGRAVED LB3591
 36-46-42 AND ANY COMBINATION OF NUMBERS DENOTES SECTION, TOWNSHIP AND RANGE